

# HOW TO APPLY FOR VIRTUS SPORT ELIGIBILITY

## For US Athletes with Intellectual Impairments

### Who should apply?

US Athletes with intellectual impairments can apply for three groups offered at Virtus International Events through Athletes Without Limits:

- ▶ **Intellectual Disability** (Virtus II1)
- ▶ **Down Syndrome with ID** (Virtus II2)
- ▶ **Autism** (Virtus II1 or Virtus II3)

Virtus eligibility confirming Intellectual Disability (II1/II2) needed for U.S. Paralympic Classification.

### Supporting Documentation:

Athletes can apply with your School IEP to get started, and we'll let you know what's needed!

To understand full International requirements download our [Supporting Documentation for Virtus Sport Eligibility \(PDF\)](#) –you can share it with your psychologist if you need new testing.

### Application Fee:

There's a **one-time application fee of \$150** for lifetime Virtus eligibility – including US National review by Athletes Without Limits and full International confirmation by Virtus.

### Review Timelines:

We'll post eligible athletes to our Eligibility Lists (and will let U.S. Paralympics know when athletes are also eligible for Paralympic Classification.)

National reviews typically take @ 4-6 weeks but can take longer when there are big events with lots of applications, a complex application, or when your event is not time-sensitive.

Those in events requiring International Virtus confirmation should allow 4-12 weeks (once all information needed has been provided).

Be sure to [contact us](#) to keep us posted on the time-sensitivity of your upcoming event!

## 1-Get Ready!

Gather the following to upload:



### A. Headshot

### B. US Passport (or State ID)

### C. School IEP & Diagnosis Reports

To get started, include your **School IEP** and any other reports with your Autism, Intellectual Disability, or Down Syndrome **testing & diagnosis**.

Athletes with Down Syndrome should include their **genetic report** (usually done at birth) and any past **neck X-ray reports for AAI screening** you've had.

We'll let you know what more may be needed!

## 2-Get Set!

### Athletes should have a Parent or Legal

**Guardian with you** when you complete the online application so you can both electronically sign Privacy and Release forms. (If that's not possible or a helper is assisting we'll email a pre-filled *PDF Release* to gather signatures after you apply.)

## 3-Go!

Apply using our HIPAA-friendly form at:

[www.athleteswithoutlimits.org/eligibility](http://www.athleteswithoutlimits.org/eligibility)

To *submit additional information* after you've applied you can use the same form above.



MEMBER OF THE  
**INTERNATIONAL  
PARALYMPIC  
COMMITTEE**



*Athletes Without Limits*

*Share these guidelines with your psychologist or doctor if you need to get new testing for eligibility!*

# SUPPORTING DOCUMENTATION FOR VIRTUS INTERNATIONAL SPORT ELIGIBILITY

## THREE INTELLECTUAL IMPAIRMENT GROUPS:

	<b>Intellectual Disability Group .....Page 2-4</b> Includes Autism with Intellectual Disability
	<b>Down Syndrome Group .....Page 5-6</b> Intellectual Disability with Significant Additional Impairment
	<b>Autism Open Group.....Page 7-8</b> For those not in II1 group including higher functioning
	<b>Appendix: Organizations &amp; Events That Recognize Virtus Eligibility .....Page 9</b>

## ABOUT VIRTUS INTERNATIONAL

*Virtus.sport is the international governing body for athletes with intellectual impairments, establishing eligibility criteria and guidelines worldwide and a member of the International Paralympic Committee.*

**VIRTUS EVENTS:** With limited Paralympic pathways for athletes with intellectual impairments, Virtus hosts high-level international events in 12 summer and 2 winter sports open to athletes competing in all three Virtus Competition Groups in this Guide.

**PARALYMPIC INCLUSION:** Virtus eligibility confirming intellectual disability (II1/II2) is the pathway to Paralympic Classification and the Paralympic Games in three summer sports below. Virtus (and AWL) are advocating for Paralympic Skiing so athletes w/Intellectual Disability can compete in the Winter Paralympics!

## ABOUT ATHLETES WITHOUT LIMITS

*We're a small national nonprofit dedicated to helping athletes with intellectual impairments access big opportunities to compete at their highest level. As the USA Member of Virtus since 2009 we focus on:*

**ELIGIBILITY:** We've reviewed 1,000+ U.S. athlete applications for high-level Virtus eligibility, including US Paralympians with Intellectual Impairment. We partner with organizations like The USOPC, USGA, US Para Karate, US Rowing, Move United, USADSS, U. of Michigan Adaptive, Project Inspire Soccer League and more!

**EVENTS:** We organize National Teams competing at Virtus World Championships & Global Games worldwide. In 2025, we took our 20th International trip! We sometimes host events in the US, like the Virtus Tennis and Virtus Cross Country Worlds or partner like with the U. of Michigan annual Miller Family Track & Field Meet.

**EQUITY:** We advocate for the inclusion of athletes with intellectual impairments into all mainstream, community and para programs and events so they too can compete at all levels in sport.



MEMBER OF THE  
INTERNATIONAL  
PARALYMPIC  
COMMITTEE



*Athletes Without Limits*

# II1: Intellectual Disability Group

This Virtus Group & Paralympic Class includes athletes with recently confirmed diagnosis of Intellectual Disability who meet all World Health ICD-11 criteria below. Some athletes with Autism compete in this group if they meet all criteria.

*Athletes who meet these criteria are eligible for U.S. Paralympic opportunities in select sports.*

## Documentation Needed for Virtus II1 Group:

### ATHLETE CHECKLIST:

#### VIRTUS INTERNATIONAL REQUIREMENTS:

To compete in the Virtus II1 Competition Group (or pursue US Paralympic Classification) athletes must meet ALL requirements below:

- ☐ **1) Full-Scale IQ score of 75 or lower on WAIS, WISC or STANFORD BINET**  
*Given within the last 5 years\**
- ☐ **2) Significant limitations in Adaptive Behaviour with at least one area scoring 70 or lower on VINELAND, ABAS, or AAMR**  
*Given within the last 5 years\**
- ☐ **3) Intellectual Disability evident prior to age 22**  
Assessment results prior to age 22 should be attached or noted in the report showing athletes met IQ and Adaptive criteria above before age 22 (or other evidence explained by a Psychologist).
- ☐ **Diagnosis of Intellectual Disability Clearly stated by a Licensed Psychologist**  
Assessment and report should provide detailed developmental history; analysis of IQ and Adaptive scores within the criteria; address onset; and conclude a diagnosis of Intellectual Disability **(Remote assessments are not accepted)**

#### US NATIONAL REQUIREMENTS:

\*Older and alternate assessments than those above like School IEPS may be considered for events that only require *National Eligibility* or *National Paralympic Classification*.

### FOR PSYCHOLOGISTS:

#### WHEN NEW ASSESSMENTS ARE NEEDED:

Athletes who don't already have Virtus-accepted assessments within the last 5 years may need to meet (in person) with a qualified psychologist for new assessments to confirm their diagnosis. (Virtus does not accept remote assessments.)

Because assessments for Virtus eligibility may differ from usual clinical practice it's important to review these guidelines – and know your report will be reviewed by fellow psychologists with experience diagnosing Intellectual Disability and Autism.

If the athlete only needs a new IQ or a new Adaptive (but not both) please outline in your report how the athlete meets all criteria noting by including recent assessments and providing concluding diagnosis.



**See next page for Sample Diagnostic Report for Intellectual Disability As Guidance for US Psychologists**

### *Autism...Virtus II1 or II3?*

It's important to determine whether athletes with Autism are eligible for the II1 Group or II3 Group: Those with II1 Intellectual Disability compete in both Virtus & Paralympic events; those in II3 can compete at *Virtus events* but are not eligible for *Paralympics*.

**Questions?** We encourage US Psychologists to reach out to us using our [Contact Us](#) form.



## Sample Diagnostic Report for Intellectual Disability (For Virtus II1 & Paralympic Sport Eligibility)

This report template is provided as a guide to help US psychologists understand key information Virtus National & International Psychologists are looking for when they confirm an athlete's eligibility.

For the latest full International Eligibility Guidance written by and for psychologists visit:

<https://virtus.sport/virtus-eligibility-procedures-guidance>

### Psychologist or Clinic Letterhead

Psychologist Name: \_\_\_\_\_  
Qualifications & Professional Bodies: \_\_\_\_\_  
Email & Phone: \_\_\_\_\_  
Location of Assessment: \_\_\_\_\_

Athletes Full Name: \_\_\_\_\_  
Athletes Date of Birth: \_\_\_\_\_  
Date of Assessment: \_\_\_\_\_  
Age at Assessment: \_\_\_\_\_

**Required Assessments:** Virtus accepts **WISC, WAIS or Stanford Binet for IQ** and **ABAS, Vineland or AAMR for Adaptive** that have been given in person within the last 5 years to confirm a current diagnosis of Intellectual Disability (**remote assessments are not accepted**).

Consider if an athlete has Autism and is borderline for Intellectual Disability whether a Virtus-accepted Autism diagnostic tool might also be needed for the Virtus II3 Autism group if ID is not confirmed. Virtus accepts past ASD diagnosis (any date) if it is based on: **ADOS/ADOS 2, ADR-I, ASRS, CARS, AAA, DISCO, GARS, or RIMLAND**.

### Introduction

Here the psychologist should explain the purpose of the assessment, a description of the tools and methods used, and why they have been chosen. The psychologist should also explain the athlete's attitude towards the assessment, whether they are accompanied by parents/carer, etc., and any issues that may affect the outcome.

### Developmental History

Here the psychologist should explain any relevant background to the athlete, including education, family background, medical background (if relevant to the assessment), and the results of any previous tests. The aim is to build a general picture of the athlete. *We would expect this section to be no shorter than 2 paragraphs.*

### IQ Assessment

Here the psychologist should explain the results of the current (or recent if the athlete has one within the last 5 years) WISC, WAIS, or Stanford Binet assessment, commenting specially on each domain. For example, in the WAIS test, this would include a summary of Verbal and Performance sub-tests, including scores achieved.

The psychologist should explain in detail any significant variation in sub-test scores and the implications for interpretation of the full IQ score, following the instructions in the test manual.

Where provided by the IQ test, reporting of the exact standardised scores is required; the confidence range or age equivalence are not sufficient on their own. We would also expect a summary of the IQ scores achieved. (using WAIS IV for example below).

	Standard Score	95% confidence range
Verbal Comprehension		
Perceptual Reasoning		
Working Memory		
Processing Speed		
<b>Full Scale Score:</b>		
<b>General Ability (GAI)</b>	Calculate GAI if warranted by significant sub-test scatter per testing manual.	

## Sample Intellectual Disability Diagnostic Report (Cont.)

### Adaptive Behaviour

Here the psychologist should explain how the current (or recent if the athlete has one within the last 5 years) Vineland or ABAS assessment was conducted, who was consulted, and then summarize the results of the assessment (**overall & numerical domain scores**) commenting on each domain. (*Ex. below is for Vineland*).

If only one source of information is provided (parent), consideration must be given to any possible bias in reporting; best practice is to have more than one source and/ or seek corroborative evidence.

[Note: If Adaptive results don't show one or more domains of 70 or lower, but the psychologist's clinical opinion is that overall evidence supports Intellectual Disability diagnosis, explanation is crucial for eligibility consideration.]

#### Communication - Score achieved or findings:

The psychologist should provide an interpretation/summary of results/findings in this area.

#### Daily Living - Score achieved or findings:

The psychologist should provide an interpretation/summary of results/findings in this area.

#### Socialization - Score achieved or findings:

The psychologist should provide an interpretation/summary of results/findings in this area.

#### Motor Skills - Score achieved or findings:

The psychologist should provide an interpretation/summary of results/findings in this area.

### Age of Onset

If the athlete is aged 22 or over at the time of assessment, then the psychologist would explain here what evidence is being submitted from before age 22 to show that *Intellectual Disability* was recognized during the developmental period.

### Attachments

The psychologist should attach the official summary score sheets (*samples pictured right*) when available for the IQ and Adaptive Behaviour. Also, attach any past reports relevant to Age of Onset or diagnosis.

### Sample Attached Score Sheets for WISC & ABAS

The image shows a sample WISC-V score sheet. It includes sections for Summary, Subtest Scores, and Composite Scores. The scores are presented in a grid format with columns for raw scores, scaled scores, and standard scores. The sheet is marked with a large 'SAMPLE' watermark.

The image shows a sample ABAS-3 score sheet. It includes sections for Summary, Subtest Scores, and Composite Scores. The scores are presented in a grid format with columns for raw scores, scaled scores, and standard scores. The sheet is marked with a large 'SAMPLE' watermark.

### Final Diagnosis

Here the psychologist will summarize the main findings, explain any circumstances that may have affected the test results, and provide a clear statement confirming a diagnosis of *Intellectual Disability* (and other confirmed diagnoses).

***The report should clearly conclude whether a diagnosis of Intellectual Disability has been confirmed by the psychologist.***

### Psychologist's Signature & Date

### What if the diagnosis is Autism without Intellectual Disability?

If new IQ and Adaptive assessments don't confirm a diagnosis of Intellectual Disability, you could help the athlete confirm they have an accepted ASD test for the **Virtus II3 group**.

If they haven't already had one of the tools below, you could administer one & confirm their Autism diagnosis in your report (see p7)

Virtus accepts: **ADOS/ADOS2, ADR-I, ASRS, CARS, AAA, DISCO, GARS, or RIMLAND.**

# II2: Down Syndrome Group

Virtus events offer a separate II2 group for athletes with Intellectual Disability when they have *additional functional impairments* that affect sport, such as most athletes with Down syndrome (or others with significant additional impairments).

Down Syndrome Documentation Needed for Virtus II2 Group:

## ATHLETE CHECKLIST:

To compete in the Virtus II2 Competition Group, athletes with Down Syndrome must provide:

### TYPE OF DOWN SYNDROME:

- ☐ **1. Genetic results from karyotype blood test showing Trisomy 21 or Translocation as type.**  
Most will have this from birth— if not, your doctor can help you arrange a new genetic blood test. For National a doctors note may be accepted.

### AAI ATLANTO-AXIAL NECK SAFETY:

- ☐ **2. Doctor Signed [Virtus AAI Release Form](#)**
- ☐ **3. Neck X-ray (Cervical Spine Image) report**  
Most athletes with Down syndrome already have a past neck X-ray report they can submit. If not, one can be arranged with your doctor.

### SEEKING PARALYMPIC CLASSIFICATION?

- ☐ **4. IQ and Adaptive Behavior Scores (any date)**  
Athletes with Down Syndrome need to provide Virtus II1 Intellectual Disability documentation for Paralympic Classification in:  
Swimming, Table Tennis, Track (or USGA Golf)

Athletes with rare **Mosaic Down syndrome** please **contact us** for guidance.

### II2-OTHER ADDITIONAL IMPAIRMENTS:

There may be athletes with Intellectual Disability who have *other additional medical impairments* that affect sport performance as significantly as Down Syndrome (ex: mobility issues, CP, etc)

Please **contact us** for more guidance on this complex pathway to the Virtus II2 group.



See Next Page for Sample  
Genetic Testing & AAI Neck Scan

## ATLANTO-AXIAL INSTABILITY (AAI):

All athletes with *Trisomy 21, Translocation, or Mosaic Down Syndrome* must have their doctor sign the AAI Release Form and attach a neck scan report.

AAI is a rare condition that leads to an increased flexibility in the neck joint and can sometimes make a person more at risk of injury and is more prevalent amongst people with Down syndrome.

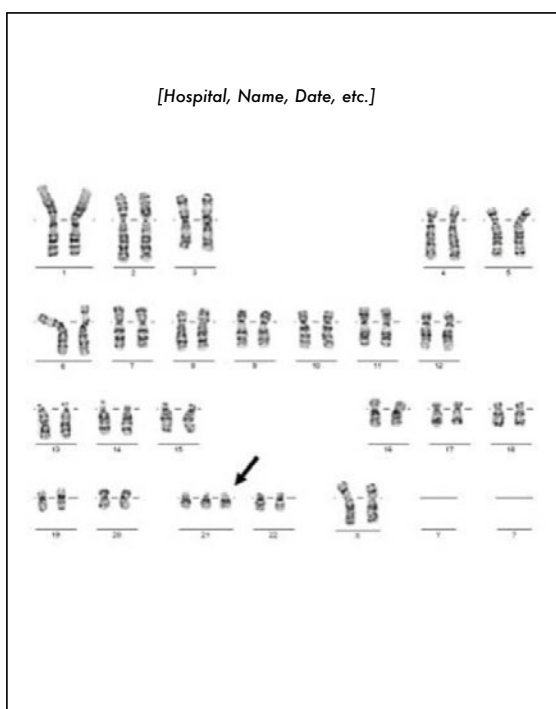
***Due to the risk of injury, athletes with symptomatic AAI may not participate in Virtus competition.***

Athletes with no AAI symptoms may compete at their own risk subject to the following:

- A doctor or physician signs the application form giving the appropriate clearances.
- Legal consent to compete is given (from a parent/ guardian where the athlete is under 18 or without legal capacity to give consent).
- Neck flexion allows chin to rest on chest..
- Person has good head/neck muscular control.
- No sign of progressive myopathy or muscle degeneration. Some signs are:
  - Increase in muscle weakness
  - Loss of sensation
  - Onset of incontinence
  - Alteration in muscle tone
  - Decreasing co-ordination
  - Diminishing kinesthetic awareness
  - Change in walking pattern
  - Pins and needles



## Sample Down Syndrome Genetic Karyotype & Report



**labcorp**

Ordered Items: Chromosome, Blood, Routine; Venipuncture; Count 15-20 cells, 2 Karyotype; Chromosome Blood Routine 88230

Date Collected: 06/01/05 Date Received: 06/01/05 Date Reported: 06/01/05 Fasting: No

**Chromosome, Blood, Routine**

Test	Current Result and Flag	Previous Result and Date	Units	Reference Interval
Specimen Type <sup>TM</sup>	BL000			
Cells Counted <sup>TM</sup>	20			
Cells Analyzed <sup>TM</sup>	20			
Cells Karyotyped <sup>TM</sup>	2			
GTC Band Resolution Achieved <sup>TM</sup>	500			
Cytogenetic Result <sup>TM</sup>	47, XY, +21			

**Interpretation<sup>TM</sup>**

Comment:  
ANOMALY: male karyotype with trisomy 21.  
Cytogenetic analysis of PMA stimulated cultures revealed a male karyotype with trisomy 21 in all GTC metaphases analyzed. This result is consistent with the diagnosis of Down syndrome. Some of the phenotypic manifestations of this syndrome are hypotonia, round flat face, single palmar crease, epicanthic folds, small ears, intellectual disability, and a flat nape of the neck.

Director Review<sup>TM</sup> Comment:

PDF

**Disclaimer**  
The Previous Result is listed for the previous test performed by Labcorp in the past 3 years where there is sufficient patient demographic data to match the result to the patient.

**Non Legend**  
A list of reference ranges: ■ Critical Values

**Performer Labs**

**labcorp** Final Report Page 1 of 2

©2012 Laboratory Corporation of America Holdings  
All Rights Reserved. Copyright Report Version 1.00

This document contains private and confidential health information protected by state and federal law.  
If you have received this document in error please call 888-888-2700



## Sample AAI Doctor Release Form With Neck Scan Report

E-Sign HIPAA Form at: <https://www.athleteswithoutlimits.org/eligibility/aai-physician-form>

Virtus & Paralympic Sport Eligibility Application for Athletes with Intellectual Impairments

**ATHLETES NAME:**

**APPENDIX 1 - ATLANTOAXIAL INSTABILITY (AAI) -**  
This page to be completed by the athletes doctor/physician.

Physicians can E-sign this release in our hipaa compliant online form!  
<https://www.athleteswithoutlimits.org/eligibility/aai-physician-form>

**DOCTOR AAI RELEASE ONLY REQUIRED FOR ATHLETES WITH DOWN SYNDROME**

To be completed by a qualified medical practitioner. Please place a ✓ in the appropriate box:

	example	Yes <input checked="" type="checkbox"/>	No <input type="checkbox"/>
Does the athlete have a known diagnosis of symptomatic AAI?		Yes <input type="checkbox"/>	No <input type="checkbox"/>
Does the person show evidence of progressive Myopathy?		Yes <input type="checkbox"/>	No <input type="checkbox"/>
Does the person have poor head/neck muscular control?		Yes <input type="checkbox"/>	No <input type="checkbox"/>
Does the person's neck flexion allow the chin to rest on their chest?		Yes <input type="checkbox"/>	No <input type="checkbox"/>

Copy of neck x-ray report is attached (mandatory) Yes ☐ No ☐

This can be a previous scan the athlete already has in their records.

**STATEMENT:** In my professional opinion I confirm the athlete is free from symptomatic AAI and is safe to participate in competitive sport. I confirm the athlete and their family/guardians have been made aware of the risk and that Virtus: World Intellectual Impairment Sport accepts no responsibility in the event of injury arising from AAI.

I confirm that I am a physician/doctor qualified in the assessment and diagnosis of AAI.

PHYSICIANS: Please confirm which TYPE of Down syndrome the athlete has:  
☐ NOT SURE ☐ TRISOMY 21 ☐ TRANSLOCATION ☐ MOSAIC

Practitioner Name (Last Name or Family Name) (First Name or Given Name)

Qualification/Profession

Address

Phone Number +1 Country code/number

Email Address

Signature

Date

Official Stamp:

To whom it may concern,

Attached is the cervical spine image.

Thank you,  
EVCC

**evdi** MEDICAL IMAGING

PATIENT NAME: SSN: MRN:

PROVIDER

Central Scheduling  
PHONER: 480-658-8828  
FAX: (480) 632-1132

Services provided at: EVDI Medical Imaging - Gilbert  
DATE OF EXAM: 06/01/2005  
ACCESSION:

EXAM: CERVICAL SPINE

CLINICAL HISTORY: Down's syndrome. Question subluxation.

TECHNIQUE: One view was obtained.

FINDINGS: The prevertebral space measures 3 mm. This is within normal limits.

CONCLUSION: Negative for evidence of atlantoaxial subluxation on a single neutral lateral view of the cervical spine.

Dictated By: on 06/01/05

Transcribed By: dr on 06/01/05, 2:07 PM, DVI Job: 65

Electronically signed

Chandler \*  
1970 W Chandler Blvd  
Suite 135, 101\*  
(480) 521-0196

Desert \*  
1430 S Cotton Rd  
Suite A100, #101, #127  
(480) 354-4011

Desert Open MRI  
2130 W Southern Ave  
Suite 2  
(480) 494-4003

East Mesa \*  
8424 E Broadway Rd  
Suite 101  
(480) 430-3819

Gilbert  
605 W Gilbert Rd  
Suite 104  
(480) 507-4000

Greenwood \*  
2080 W Southern Ave  
Suite 3-10  
(480) 382-4100

Tempe  
1340 E Vintner Rd  
Suite 104  
(480) 758-2800

Desert Breast Center  
1750 E Southern Ave  
Suite 100  
(480) 455-8808

\* Center refers also provides Breast Imaging Services

6/3/05

## II3: Autism Open Group

Virtus added this competition group to provide a pathway for athletes with Autism who don't have an II1-eligible diagnosis of Intellectual Disability. With no IQ threshold this group includes those with 'high functioning' Autism.

Documentation Needed for Virtus II3 Group:

### AUTISM CHECKLIST:

#### INTERNATIONAL REQUIREMENTS:

Virtus requires a formal diagnosis of Autism or ASD carried out by qualified practitioners, using latest accepted [ICD](#) or [DSM](#) diagnostic techniques.

Reports from any date or age can be submitted since Autism is often diagnosed in childhood.

**For many athletes, their original Autism diagnostic report will contain the required information:**

- ☐ **Assessment includes a Virtus-accepted Autism method with scores and analysis provided. Virtus accepts: AAA, ADOS/ADOS2, ADI-R, ASRS, CARS, DISCO, GARS, or RIMLAND.**
- ☐ Assessment has been carried out by an appropriately qualified professional (s) who have concluded a diagnosis of Autism.
- ☐ There is a detailed developmental history focusing on developmental and behavioural features consistent with ICD-11, ICD-11M, and DSM-5-RIA for Autism.
- ☐ Assessment has included direct contact and interaction with the athlete, focusing on the autistic features as defined above.  
**(Remote assessments are not accepted)**

#### US NATIONAL REQUIREMENTS:

Alternate Autism tests, a diagnosis from School IEP, or a practitioners note stating the diagnosis may be considered for events that only require National eligibility from Athletes Without Limits.

### FOR PSYCHOLOGISTS:

#### WHEN NEW ASSESSMENTS ARE NEEDED:

If the requirements listed above are not available from previous reports, athletes may need new assessments (in person) with a licensed Psychologist to confirm their Autism diagnosis (and possibly clarify *Intellectual Disability*).

Because assessments for Virtus eligibility may differ from usual clinical practice, it's important to review these guidelines – your report will be reviewed by fellow psychologists with experience diagnosing Intellectual Disability and Autism.

Note that Virtus does not accept assessments conducted remotely – they must be in person.



**See next page for Sample Diagnostic Report for Autism as Guidance for US Psychologist**

### *Autism...Virtus II1 or II3?*

It's important to determine whether athletes with Autism are eligible for the II1 or II3 Group: Those with II1 Intellectual Disability compete in both Virtus & Paralympic events: those in II3 can compete at [Virtus events](#) but are not eligible for *Paralympics*.

**Questions?** We encourage US Psychologists to reach out to us using our [Contact Us](#) form.



## Sample Diagnostic Report For Autism (Virtus II3 Group)

This report is provided as a guide to help US psychologists understand key information the Virtus National & International Psychologists are looking for when they confirm an athlete's eligibility. For the latest full International Eligibility Guidance written by and for psychologists, visit:

<https://virtus.sport/virtus-eligibility-procedures-guidance>

### Psychologist or Clinic Letterhead

Psychologist's Name: \_\_\_\_\_  
 Qualifications & Professional Bodies: \_\_\_\_\_  
 Email & Phone: \_\_\_\_\_  
 Location of Assessment: \_\_\_\_\_

Athlete's Full Name: \_\_\_\_\_  
 Athlete's Date of Birth: \_\_\_\_\_  
 Date of Assessment: \_\_\_\_\_  
 Age at Assessment: \_\_\_\_\_

### Introduction

State the purpose of the assessment, who referred the athlete, the population/age range, the setting, diagnostic framework used (DSM-5-TR, ICD-11), language and cultural considerations, and assessments given. For Autism, Virtus accepts: **ADOS/ADOS2, ADI-R, ASRS, CARS, DISCO, GARS, AAA or RIMLAND**

Consider if Virtus-accepted **IQ (WISC, WAIS, or SB)** and **Adaptive Behavior (ABAS or Vineland)** might help an athlete with Autism clarify eligibility for **Virtus II1 Intellectual Disability** (required for Paralympic eligibility).

### Developmental History

Summarize early development, key developmental milestones, trajectory (including any loss or plateau of skills), medical history, family history relevant to autism or other conditions, educational history, social history, any adverse experiences, and current daily living skills. *If the athlete has been attending services specifically for people with autism, providing evidence of this can be helpful in cases where diagnosis is complex.*

### Details of the Assessment Methods Used

Describe the assessments administered, including autism-specific tools and modules, cognitive/developmental, language/communication, adaptive behavior measures, and social-communication tools. Note any observations in naturalistic or structured settings, informant reports, language/translation considerations, and any additional procedures performed. If completed by a multidisciplinary team, state each contribution.

### Full Results of the Assessment, Including Scores

Provide a concise synthesis of findings across domains (social communication, restricted/repetitive behaviors, adaptive functioning, cognitive profile, language, attention). List diagnostic test results with tool name, version, module or subtest, scores, and clinical cutoffs, noting any important discrepancies between measures, along with collateral information and any co-occurring or differential diagnoses.

### Detailed Analysis and Discussion of Assessment Findings

Integrate information from history, observations, and test results. Explain how findings align with diagnostic criteria, indicate the degree of impairment in each domain, and justify the diagnostic decision (or rationale for not diagnosing) with reference to specific data. If the assessment was carried out against DSM/ICD criteria, ensure evidence is presented against each criterion of autism. Identify medical, mental health, language, or interpretation **factors that could influence results**, as well as test-taking abilities, cultural/educational biases, and environmental conditions during assessment.

### Conclusion and Diagnosis

Provide the diagnostic decision (Autism Spectrum Disorder or not), a brief rationale (few bullets linking data to criteria), and a signed declaration including the assessor's name, qualifications, date, and contact information.

### Psychologist's Signature & Date

## APPENDIX:

# Organizations & Events that recognize Virtus Eligibility

Virtus is the International federation for athletes with intellectual impairments and represents high-level athletes (including Paralympians) with intellectual impairments worldwide – some or all Virtus eligibility groups below are recognized by a large number of sport organizations both in the US and internationally!

Virtus II1 Group: **Intellectual Disability or Autism with Intellectual Disability**

Virtus II2 Group: **Down Syndrome** (or Intellectual Disability with Additional Functional Impairments)

Virtus II3 Group: **Autism Open** (those not in II1 group above)

## Athletes Without Limits Trips to Virtus Events (Open to Virtus II1, II2, and II3):

Virtus eligibility is needed for athletes striving to qualify for an Athletes Without Limits event or National Team Trip to Virtus International event in 14+ summer and winter sports.

## Paralympic Games Sports & Classes Open to Virtus II1/II2 Athletes:

- World Para Swimming / U.S. Paralympic Swimming (Class S14)
- World Athletics / U.S. Paralympic Track & Field (Class T20/F20)
- ITTF / U.S. Paralympic Table Tennis (Class 11)

## Other Organizations Open to Virtus II1/II2 Athletes:

- US Para Karate (P21 and P22)
- U.S. Adaptive Open International Golf Championships (requires WR4GD in Virtus II1/II2)
- USDGA Ping National Golf Championships (requires WR4GD in Virtus II1/II2)
- and some other U.S. Adaptive Golf Events

## Organizations Open to all Virtus Groups (Virtus II1, II2, and II3):

- EDGA Golf (Most US Adaptive Events don't include WR4GD in Virtus II3 - but some EDGA events do!)
- World Taekwondo / USA Taekwondo
- World Rowing/US Rowing
- Move United Events (New in 2026 – events will include Para Classes & all three Virtus Groups!)
- Boston Marathon/Half/10k/5k Events (Para Classes & General Adaptive for all Virtus Groups!)
- University of Michigan Adaptive Sports/Miller Open (Para Classes & all three Virtus Groups!)
- Project Inspire Soccer Teams (Apply using our separate [Inspire League Soccer Application](#))
- and More!

## [Visit our Event Calendar for Upcoming Opportunities!](#)